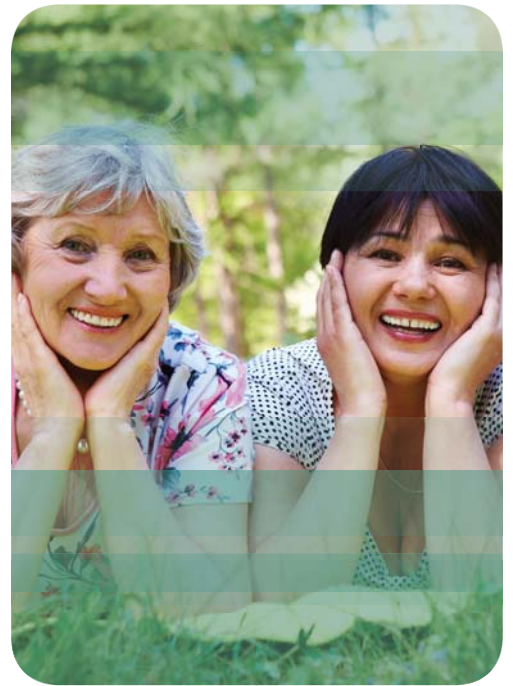


BreastScreen Australia Conference

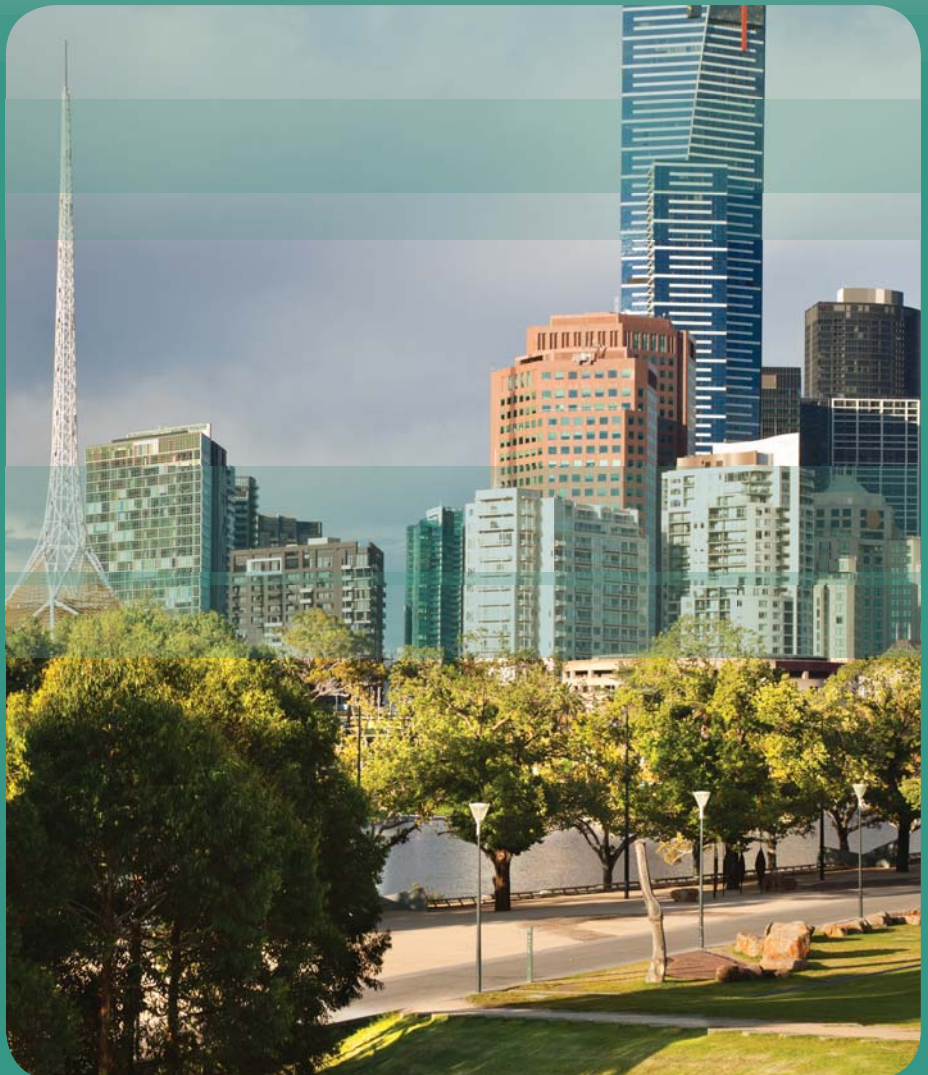
Hilton on the Park, Melbourne
28–30 October 2011

Celebrating
20
YEARS
achievement
& service



www.bsaconference.com.au

Registration Brochure



BreastScreen
AUSTRALIA

A joint Australian, State and Territory Government Program

Table of Contents

Invitation	2
Keynote Speaker	3
Call for Abstracts	3
Program Outline	3
Optional Sessions	4
Social Program	5
How to Register	5
Accommodation	6
Venue Information	7
Travel Information	7

Committee

Vicki Pridmore

BreastScreen Victoria (Conference Chair)

Tracey Bessell

Screening Section, Department of Health and Ageing

Gelareh Farshid

BreastScreen SA

Jennifer Muller

Cancer Screening Services Branch, Queensland Health

Liz Wylie

BreastScreen WA

Conference Organisers

thinkbusinesssevents

passionate about conferences

Suite 6, 19–23 Hoddle Street

Richmond VIC 3121

Telephone: + 61 3 9417 1350

Facsimile: + 61 3 8610 2170

Email: bsa@thinkbusinesssevents.com.au



Invitation

It is with great pleasure that we invite you to participate in the BreastScreen Australia Conference, to be held in Melbourne, 28–30 October 2011. This Conference will celebrate twenty years of breast cancer screening in Australia through the BreastScreen Australia Program, showcase learnings & innovative solutions to the challenges of breast screening in Australia and examining opportunities for further developments.

The Conference program will cover both clinical and non clinical aspects of the Program including **clinical dilemmas in breast cancer screening, screening hard to reach women, screening women with a past history of breast cancer, DCIS, provision of client information, emerging workforce issues and quality and research in the Program.**

We are delighted to welcome **Professor Stephen Duffy** as the keynote speaker for this Conference. Professor Duffy is a highly respected expert on cancer screening and epidemiology who is widely published and a renowned public speaker. His team have made valuable contributions in assessing the issue of over-diagnosis through mammographic screening. We can look forward to enlightening discussions about over-diagnosis, allowing clinicians, researchers and consumers to respond to this hot topic.

As breast cancer screening in Australia enters its third decade, we look forward to examining our achievements and learning thus far and inviting innovative responses to the challenges of providing high quality services to Australian women across this vast and diverse country.

We invite you to join us and three hundred of your colleagues in Melbourne for an interesting and successful Conference. We are confident that whatever your discipline, you will find the experience stimulating and enjoyable.

On behalf of the committee I look forward to welcoming you to Melbourne in October 2011.

Regards

Vicki Pridmore

Conference Committee Chair

Key Dates

Call for Abstracts closes

Thursday 30 June 2011

Early Bird registration closes

Wednesday 31 August 2011

Accommodation bookings close

Wednesday 28 September 2011

Welcome Reception

Friday 28 October 2011

Conference Dinner

Saturday 29 October 2011

Conference program dates

Saturday 29 October – Sunday 30 October 2011

Keynote Speaker



Stephen Duffy

Stephen Duffy works as Professor of Cancer Screening at Queen Mary University of London, in the Cancer Research UK Centre for Epidemiology, Mathematics and Statistics. Previous employers include the MRC, IARC and the Universities of Edinburgh and Durham.

He was trained as a statistician, educated at the University of Edinburgh and Imperial College, London.

He has worked in the UK, France, Singapore, Sweden, Denmark and Russia. He specialises in evaluation of cancer screening programmes, cancer epidemiology, and statistical methods for epidemiological studies. He has worked on various mammography screening trials, including the pioneering Swedish Two-County Trial, the Gothenburg Trial, the UK Breast Screening Frequency Trial, the FH01 study of mammography in young women with a family history of breast cancer and the CADET studies of computer aided detection in mammography.



Conference Program

The Conference Program will include an overview of the achievements of the last 20 years and an opportunity to discuss the recommendations of the BreastScreen Australia Evaluation Final Report in particular policies related to the target age group and high risk women. The focus will be on the use of evidence to inform policy and practice in the provision of breast cancer screening in Australia.

The Conference provides a forum for sharing of ideas and experiences, presenting research findings and discussing contentious issues and policies relevant to the future of the BreastScreen Australia Program. This will be through panel discussions, a debate and a final Question & Answer Forum.

In recognition of the multidisciplinary nature of the BreastScreen Australia Program there will also be parallel streams, each featuring invited presentations and opportunities for proffered papers. In addition there will be poster presentations by delegates, commercial exhibitors and a professional bookstore.

The stream themes cover both clinical and non clinical aspects of the Program including clinical dilemmas in breast cancer screening, screening hard to reach women, screening women with a past history of breast cancer, DCIS, provision of client information, emerging workforce issues and quality and research in the Program.

Call for Abstracts

Submissions are invited for presentations in the broad areas of interest to BSA Programs. Evaluations in any aspect of the Program, including clinical research and innovative responses to the range of challenges facing the Program are encouraged. **Using the online abstract submission form on the website – www.bsaconference.com.au** you will be asked to select one of the following themes that best fits your submission.

1. Increasing participation for hard to reach women
2. Clinical dilemmas in breast cancer screening
3. Screening high risk women
4. Client information
5. Emerging workforce issues
6. Other

Abstract submission deadline: Thursday 30 June 2011

Program Outline

Approved for up to 13 RANZCR CPD Points

Friday 28 October 2011

5.30pm – 7.00pm **Welcome Reception**
Hilton on the Park, Melbourne

Saturday 29 October 2011

8.00am – 9.00am **Conference Opening**

9.00am – 10.30am **Keynote Address**

10.30am – 11.00am **Morning Tea**

11.00am – 12.45pm **Keynote Address**

12.45pm – 1.30pm **Lunch**

1.30pm – 3.00pm Concurrent Sessions

3.00pm – 3.30pm **Afternoon Tea**

3.30pm – 4.30pm Concurrent Sessions

4.30pm – 5.30pm **Plenary Session – Debate**

7.00pm – midnight **Conference Dinner**
Hilton on the Park, Melbourne

Sunday 30 October 2011

8.30am – 10.30am **Keynote Address**

10.30am – 11.00am **Morning Tea**

11.00am – 12.30pm Concurrent Sessions

12.30pm – 1.30pm **Lunch**

1.30pm – 3.00pm Concurrent Sessions

3.00pm – 3.30pm **Afternoon Tea**

3.30pm – 5.00pm **Plenary Session – Q & A Forum**

Optional Sessions

presented by

HOLOGIC™

These sessions are optional for Conference delegates and can be booked via the registration form. For more information visit the Conference website.

Breast Tomosynthesis Workshop

Workshop Learning objectives:

- To better understand the basic concepts and evolution of breast tomosynthesis.
- Learn how to read and interpret 3D images to properly identify and classify lesions.
- To gain hands-on experience with the features, functions, and performance in using a dedicated diagnostic mammography workstation in reading breast tomosynthesis cases.
- To perform a self-assessment in reading 2D (digital mammography) and 3D (breast tomosynthesis) cases using a dedicated diagnostic mammography workstation.

Date	Friday 28 October 2011
Time	Either 9am–12.30pm or 1.30pm – 5.00pm
Location	Hilton on the Park
Cost	Inclusive for delegates (bookings essential)
Inclusions	Morning or Afternoon tea
Maximum	20 people per session

Approved for **8.25 RANZCR CPD points**.

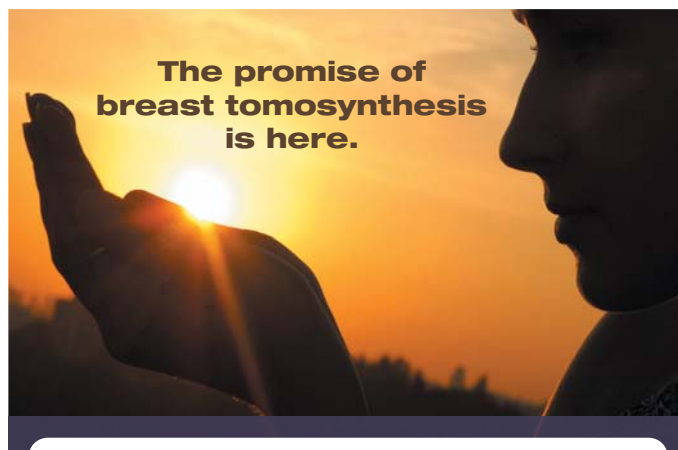
OR

Breakfast Information Session

Hologic will provide an international speaker who currently works with tomosynthesis to provide an insider's perspective into implementing tomosynthesis into clinical practice. All interested parties are welcome to attend to learn more about this development in full field digital mammography technology.

Date	Saturday 29 October 2011
Time	6.30am – 8.00am
Location	Hilton on the Park
Cost	Inclusive for delegates (bookings essential)
Inclusions	Continental Breakfast

Approved for **1 RANZCR CPD point**.



The Selenia® Dimensions® system is the first practical tool to deliver on the extraordinary promise of breast tomosynthesis. The Selenia Dimensions 3D system offers:

- 2D imaging or combo mode (2D+3D) imaging in the same compression
- Exceptionally sharp images with minimal dose
- Unparalleled flexibility for any breast imaging need
- Streamlined workflow
- Ergonomic design for comfort and ease of operation

Learn more during the
BreastScreen Australia 2011 Conference
29th-30th October
with Radiologist Tomosynthesis Workshops offered 28th October

HOLOGIC®
The Women's Health Company

call Hologic Australia 1800264073
e-mail womensimaging@hologic.com
www.hologic.com
ADS-00463



Social Program

Inclusive Functions

These functions are included in the Conference Registration.

Welcome Reception

Date	Friday 28 October 2011
Time	5.30pm – 7.00pm
Location	Hilton on the Park
Cost	Inclusive for delegates
Additional Tickets	\$50 (for partners/guests)
Inclusions	Drinks, canapes and entertainment

Conference Dinner

Extend your networking and relax at the Conference Dinner.

Date	Saturday 29 October 2011
Time	7.00pm – midnight
Location	Hilton on the Park
Cost	Inclusive for delegates
Additional Tickets	\$120 (for partners/guests)
Inclusions	Dinner, drinks and entertainment



How to Register

Register online or download a registration form at www.bsaconference.com.au

Payments can be made either by credit card, cheque or direct deposit.

Registration Fees

(inclusive of GST and in Australian Dollars)

Registration Type	Early Bird* (payment received by 31 August 2011)	Standard (payment received after 31 August 2011)
Registered Medical Practitioner	\$650	\$760
Health Professional/Consumers	\$400	\$510

*To qualify for early bird registration, registration fees must be received by 31 August 2011. Registration fees are based on date of payment receipt, not the date of receipt of registration form.

Entitlements

Registration entitles the delegate to:

- All conference sessions on Saturday 29 – Sunday 30 October 2011
- Welcome Reception on Friday 28 October 2011
- Lunch, morning and afternoon teas on Saturday 29 – Sunday 30 October 2011
- Conference Dinner on Saturday 29 October 2011
- Delegate badge and conference bag
- Conference program handbook and delegate materials

Cancellation and Refund Policy

Registration

- Cancellations received in writing to the Conference Office by 28 September 2011 will be accepted and all fees refunded less an administration fee of \$100
- Cancellations received after the 28 September 2011 cannot be accepted and will not be refunded, however transfer of your registration to another person is acceptable. The full name and details of the person that will replace you must be advised in writing to the Conference Office prior to the conference. No refunds will be made for non attendance at the Conference.

Cancellations must be made in writing to the Conference Office.

Accommodation

The Conference Office has secured competitive rates for delegates at selected hotels and apartments in Melbourne, to suit a range of budgets and preferences. Accommodation facilities are easily accessible to the conference venue and provide a comfortable and enjoyable stay for delegates. **Rooms can be booked via the registration form up until Wednesday 28 September 2011.** After this date bookings are subject to availability.

To secure a hotel accommodation booking, a deposit of one night's tariff is required, which must accompany the registration form.

Hotel	Room Type	Rate - Room Only Rates per room per night
Hilton on the Park 5* 192 Wellington Parade, Melbourne Conference Venue	Guest Room (1 King Bed)	\$255.00
	Twin Room (2 Queen Bed)	\$255.00
Quest Jolimont Serviced Apartments 4* 153-155 Wellington Parade, East Melbourne 10 minutes by foot	One Bedroom Apartment (1 x Queen Bed)	\$150.00
	One Bedroom Apartment (Parkview) (1 x Queen Bed)	\$165.00
	Two Bedroom Apartment (1 x Queen Bed & 2 x Single Beds)	\$250.00
Quest East Melbourne 4* 48 Wellington Parade, East Melbourne 5 minutes by foot	Studio Apartment (1 x Queen Bed)	\$165.00
	Studio Twin Apartment (2 x Queen Beds)	\$250.00
Mantra on Jolimont 4* 133 Jolimont Rd, East Melbourne 10 minutes by foot	Studio Apartment (1 x Queen bed or Twin Bedding)	\$158.00
	One Bedroom Apartment (1 x Queen Bed or Twin Bedding)	\$198.00
	Two Bedroom Apartment (2 x Queen Beds or 2 x Twin Beds or a mixture of both)	\$308.00

Booking

- To secure an accommodation booking, a deposit of one night's tariff is required, which must accompany the registration form. Upon check out of the hotel, delegates must settle the balance of their account.

Payment

Deposits/Payments will be forwarded by the Conference Office to the hotel/accommodation we have booked on your behalf. The rates are inclusive of Goods and Services Tax (GST), which is charged by the hotel on checkout.



Refund/Cancellation:

- Cancellation before 28 September 2011:**
Hotel Booking - The deposit for the first night is refunded, less a \$25 cancellation fee.
- Cancellation on or after 28 September 2011:**
Hotel Booking - The deposit for the first night is non refundable.
- Cancellation 15-0 days prior to arrival date:**
All rooms cancelled 15-0 days prior to arrival will incur a 100% cancellation fee. That is, all rooms will be charged at the full accommodation rate for the duration of the booking.
- No shows:**
No shows will be charged at the full accommodation rate for the duration of the booking.

Change of booking

Prior to 28 September 2011 changes to bookings must be forwarded in writing to the Conference Office.

Venue Information

Hilton on the Park

192 Wellington Parade, Melbourne
Tel: +61 3 9419 2000 Fax: +61 3 9419 2001
www.hilton.com

Parking

Self Parking at Hilton on the Park \$25.00
Valet Parking at Hilton on the Park \$45.00

Melbourne

Recognised as a marvellous place to be when voted 'world's most liveable city', Melbourne offers an exceptional lifestyle where visitors are made very welcome. It is a modern and progressive city while retaining much of its gracious, historic charm.

Renowned for its culture and arts, Melbourne also offers a vast array of sights, activities, entertainment, and epicurean experiences as well as a multitude of sporting and cultural events. Its history is fascinating and explains much of the elegant architecture; an enormous breadth of cuisines and reputation for 'best eating' in Australia; the traditions of theatre and artistic pursuits; the tag 'garden state' with its famous parks and gardens throughout the city; its exciting shopping and sports-mad locals.

Whatever your interests, something is sure to delight or enrapture. Swtroll the city streets and soak up the atmosphere, the architecture and the friendliness, linger in a bustling café, share a peaceful park with a black swan, or saunter along a city beach.

Places of interest in Melbourne:

Melbourne Zoo – view wildlife in naturalistic habitats in Melbourne's award winning zoo.

For further information visit www.zoo.org.au



Melbourne Museum – Enjoyed by over one million visitors each year, Melbourne Museum is one of Melbourne's favourite award winning cultural destinations. The latest exhibition showing at the Melbourne Museum is Tutankhamun and the Golden Age of the Pharaohs.

Revel in the splendour of Ancient Egypt as you view a dazzling array of possessions unearthed from the boy king's tomb.

For further information visit www.museumvictoria.com.au

National Gallery of Victoria – The National Gallery of Victoria has two magnificent galleries located a short walk apart – both with free entry to the permanent collection. Victorians and visitors can now enjoy two public art galleries within one magnificent arts precinct.

For further information visit www.ngv.vic.gov.au

Eureka Skydeck – for spectacular views of Melbourne from the southern hemisphere's tallest building.

For further information visit www.eurekaskydeck.com.au



Spring Racing Carnival – 29 September – 17 November 2011

The Spring Racing Carnival is a world class event showcasing thoroughbred racing, fashion and entertainment at its finest over 50 fabulous days across Victoria.

For further information, please visit www.springracingcarnival.com.au

Travel Information

Insurance

Insurance of any kind is NOT included in the registration fees – it is advised that delegates take out appropriate health and travel insurances prior to travelling. The BreastScreen Australia Conference Committee and the Conference Office do not take any responsibility for delegates failing to insure.

Getting Around Melbourne

Trams, Trains and Buses – Melbourne's trams are legendary! Enjoy a free tram experience, and see the city sights on the 'City Circle' trams that run in and around the city. Jump off and on at places of interest.

The BSA conference venue is within Transport Zone 1. The closest public transport to the conference venue is the train and tram networks. The nearest station is Jolimont Station. From Melbourne CBD catch the Epping or Hurstbridge line. The nearest tram stop is number 11 on Wellington Parade. From the Melbourne CBD catch tram number 48 or 75 which will take you to stop 11.



For information on transport routes and timetables, please visit www.metlinkmelbourne.com.au

Taxis – Taxi ranks are situated throughout the city, or can be flagged on the street.

Melbourne's major taxi companies include:

Arrow – 13 2211

Black Cabs Combined – 13 2227

Silver Top Taxis – 13 1008

Wheelchair accessible taxis – 1300 364 050

The BreastScreen Australia Conference would like to acknowledge the following supporters.

Platinum Sponsor



Gold Sponsor

SECTRA

Silver Sponsors



Australian Government
Department of Health and Ageing

FUJIFILM
MEDICAL SYSTEMS

PHILIPS
sense and simplicity

Bronze Sponsor

HOLOGIC™



More information on becoming a sponsor or exhibitor for the BreastScreen Australia Conference can be found on the website – www.bsaconference.com.au or by contacting the Conference Office:

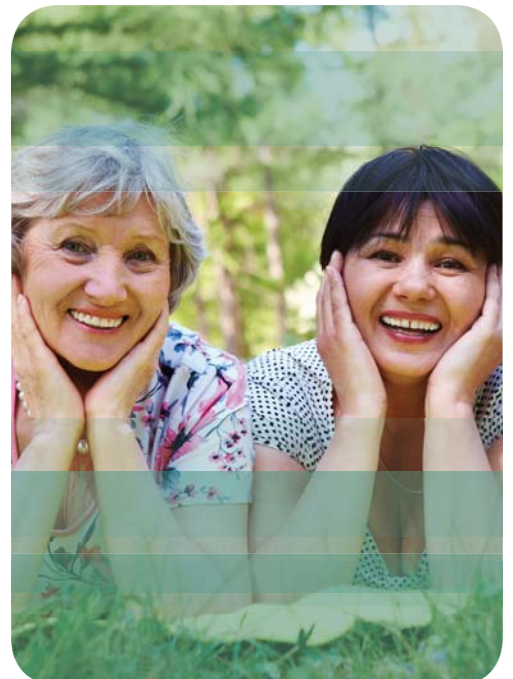
Think Business Events

Suite 6, 19–23 Hoddle Street Richmond VIC 3121
Telephone: + 61 3 9417 1350 Facsimile: + 61 3 8610 2170 Email: bsa@thinkbusinessevents.com.au

**BreastScreen
Australia
Conference**

Hilton on the Park, Melbourne
28–30 October 2011

Celebrating
**20
YEARS**
*achievement
& service*



www.bsaconference.com.au